

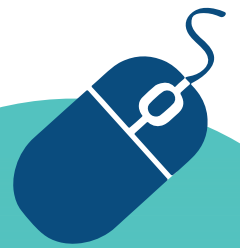
Have your say

on Nottinghamshire's proposed school admission arrangements for the **2025-2026** school year

Monday 2 October to Sunday 26 November 2023

Find out more about the proposed changes for 2025-2026 and have your say on

www.nottinghamshire.gov.uk/admissionsconsultation



Key information for 2025-2026

- › review of relevant areas
- › the proposed change to catchment area within the Gedling district (Chase Farm development)
- › the proposed changes to the Published Admission Number (PAN) at: Sir Edmund Hillary Primary and Nursery School and Walesby CofE Primary School



You can also respond by emailing:
admissionsconsultations@nottscc.gov.uk
quoting "Consultation 2025-2026"
in the subject header



Nottinghamshire
County Council

D6P/7955